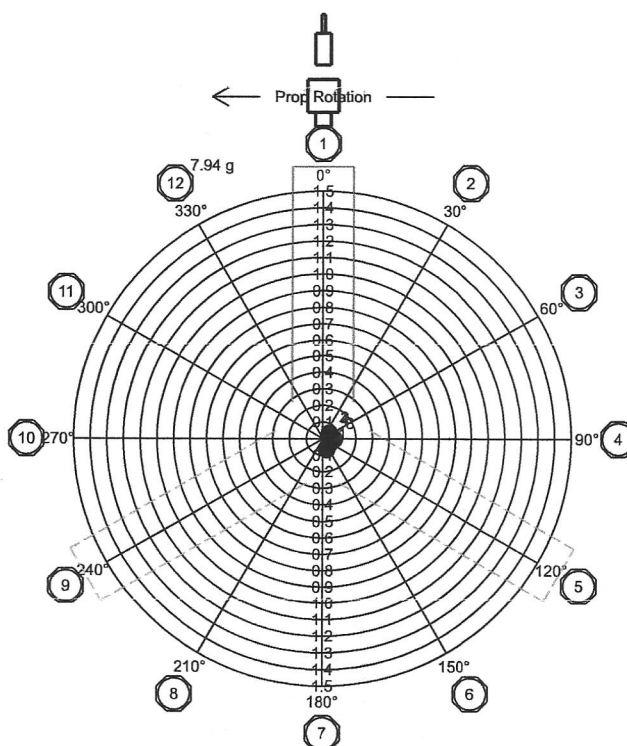
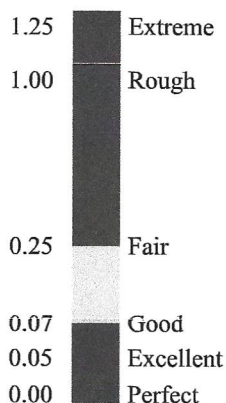


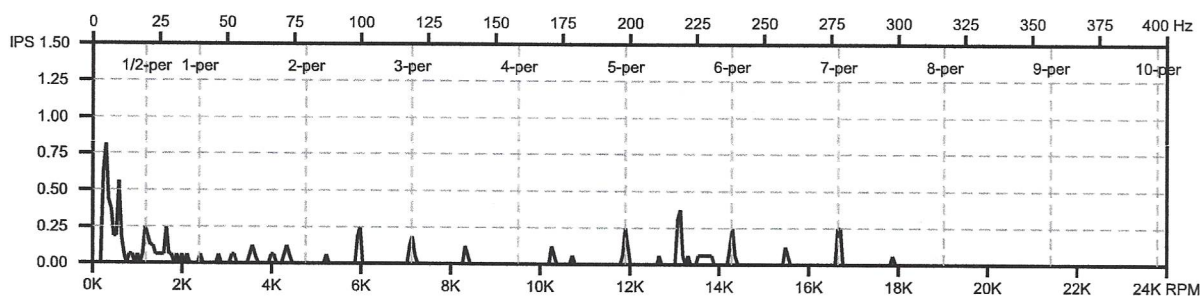


Aircraft: 182RG
 Owner: S SELLERS
 Position: FRONT
 Engine: IO540
 HP (est.): 300
 Propeller: HARTZELL
 Date: 7/19/2021 11:57



Final Reading: 0.04 IPS
 Final Weights: 7.94 g @ 330°

Mechanic &
 Cert Number: _____



Run #	Magnitude	Phase	Trim Wt 1	Trim Wt 1	Trim Wt 2	Trim Wt 2	Comments
1	0.07 IPS	160°	9.87 g	330°	--	--	
2	0.05 IPS	51°	7.94 g	300°	--	--	
3	0.07 IPS	93°	7.94 g	330°	--	--	
4	0.04 IPS	61°	--	--	--	--	Final Value

Per AC20-37E: Install a placard on the propeller hub or bulkhead stating that the propeller has been dynamically balanced and the assembly of the power train rotating components is an indexed assembly. Make an entry in the logbook with the date, engine hours, final balance vibration, location of the dynamic balance weights, signature and certificate number of the maintenance person.

For balancing tips, see www.rpxtech.com/dv-tips

Balanced with DynaVibe model GX3 by RPX Technologies, Inc. www.rpxtech.com
 Serial number: D20121701GX3 | Firmware version: 1.15 R01
 Report template revised: 2016-12-12