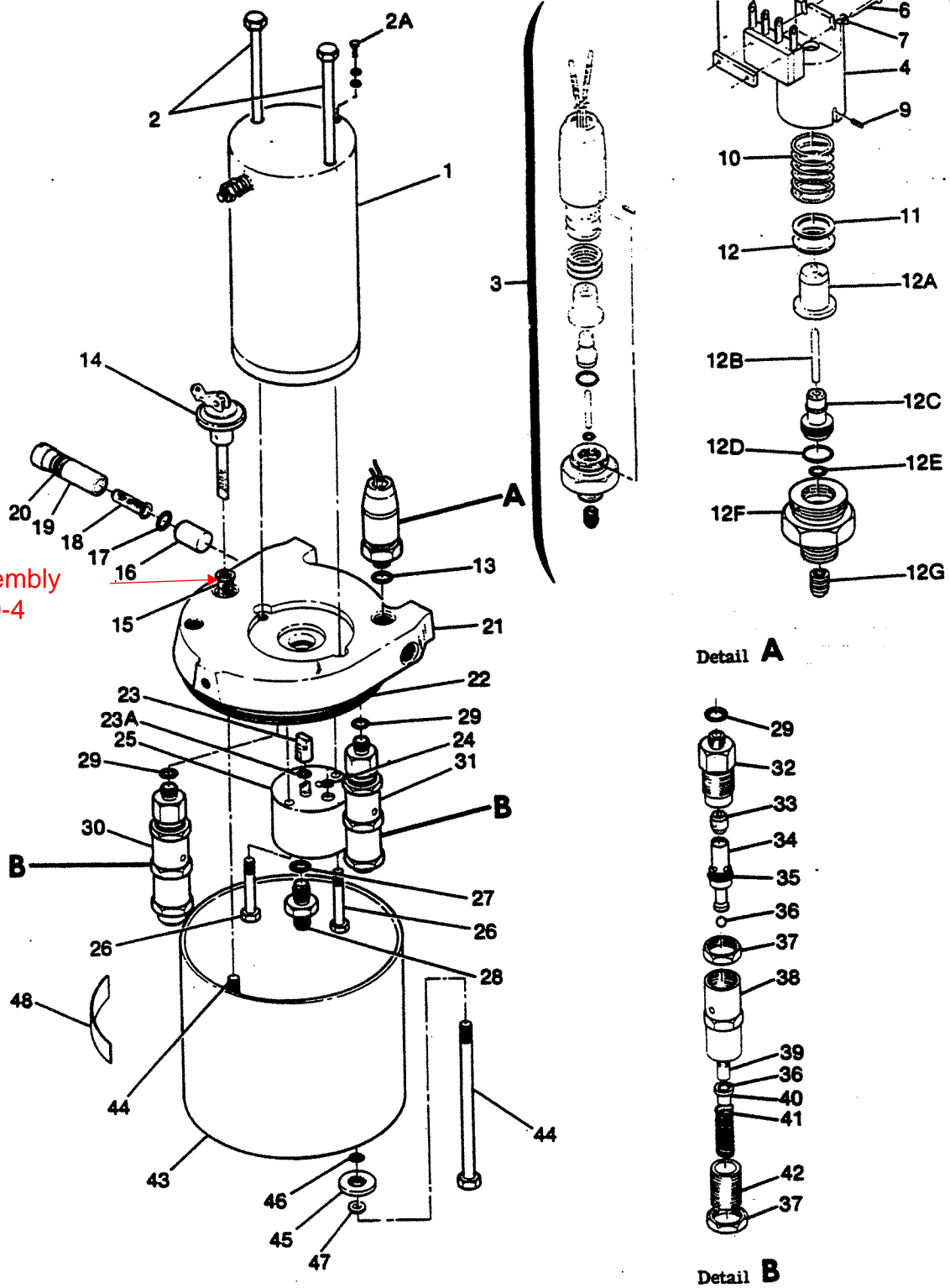


R182 & TR182 Parts Catalog

Hydraulic System (Cont)

Screen Assembly
PN 1280809-4



**R182 & TR182 SERIAL R18200584 & ON
FR182 SERIAL R18200021 THRU R18200070**

Figure 161. Hydraulic Power Pack Assembly

R182 & TR182 Parts Catalog

FIGURE AND INDEX NO.	PART NUMBER	DESCRIPTION							UNITS PER ASSY	USABLE ON CODE
		1	2	3	4	5	6	7		
161 -13	MS28778-4	PACKING							1	
-14	1280813-2	DIPSTICK							1	
-15	1280809-4	SCREEN ASSY							1	
-16	S2059-3	CHECK VALVE							1	
-17	MS28775-012	PACKING							1	
-18	1280812-1	FILTER ASSY-POWER PACK							1	
-19	1280817-6	RETAINER							1	
-20	MS28775-012	PACKING							1	
	S1628-012	BACK-UP RING							1	
-21	9881123-3	BODY ASSY-HYDRAULIC POWER PACK							1	
-22	MS28775-247	PACKING							1	
-23	9881142-1	COUPLING-HYDRAULIC PUMP							1	
-23A	MS28775-015	PACKING							1	
-24	MS28775-008	PACKING							1	
-25	9881130-1	PUMP ASSY-POWER PACK						WEU 9881130-2	1	F
	9881130-2	PUMP ASSY-POWER PACK							1	G
		ATTACHING PARTS								
-26	AN3H15A	BOLT							2	F
	NAS6203-22H	BOLT USED WITH 9881130-2							2	G
		*								
-27	MS28778-4	PACKING							1	F
-28	1280223-2	FITTING							1	
-29	MS28778-3	PACKING							2	
-30	1280835-1	VALVE ASSY-RELIEF 1800 PSI							1	
-31	1280835-2	VALVE ASSY-RELIEF 2200 PSI							1	
-32	1280832-1	ADAPTOR							1	
-33	1280831-1	ORFICE							1	
-34	1280837-1	POPPET ASSY							1	
-35	MS28775-012	PACKING							1	
-36	S272-5	BALL							2	
-37	1280825-2	NUT							2	
-38	1280833-1	HOUSING							1	
-39	1280834-3	PISTON							1	
-40	1280834-4	SPRING GUIDE							1	
-41	9881600-2	SPRING							1	
-42	1280836-2	ADJUSTMENT SCREW							1	
-43	9881122-1	RESERVOIR ASSY-POWER PACK							1	
		ATTACHING PARTS								
-44	AN4-43A	BOLT							2	
-45	1280818-1	WASHER							2	
-46	MS28778-2	PACKING							2	
-47	AN960-416L	WASHER							2	
		*								
-48	S2019-128	NAMEPLATE							1	
<p>NOTE. *THIS SWITCH NO LONGER AVAILABLE FOR SPARES-ORDER 9880710-1.</p> <p>NOTE. %WHEN INITIALLY ORDERING THIS PART FOR AIRPLANES PRIOR TO SERIAL R18201875 ALSO ORDER 9881142-1 COUPLING.</p> <p>A---R182 & TR182 SERIAL R18200584 & ON FR182 SERIAL FR18200021 THRU FR18200070</p> <p>B---R182 & TR182 SERIAL R18200584 THRU R18201541 FR182 SERIAL FR18200021 THRU FR18200070</p> <p>C---R182 & TR182 SERIAL R18201542 & ON</p> <p>D---R182 & TR182 SERIAL R18200584 THRU R18201751 FR182 SERIAL FR18200021 THRU FR18200070</p> <p>E---R182 & TR182 SERIAL R18201752 & ON</p> <p>F---R182 & TR182 SERIAL R18200584 THRU R18201783 FR182 SERIAL FR18200021 THRU FR18200070</p> <p>G---R182 & TR182 SERIAL R18201784 & ON</p> <p>H---R182 & TR182 SERIAL R18201811 & ON</p>										